

## Model 2R9 & 2R10

EXCEL® couples interlocking construction with the most advanced control system in the industry for an indestructible, automated 2RAM Baler. EXCEL's® design for automated operation eliminates the need for a full-time operator. EXCEL's® superior quality means reduced down time, automatic operation and dramatic labor savings.



### The EXCEL® Model 2R9/2R10 bales the following materials:

Office Paper, Newspaper, OCC, magazines, PET, HDPE, Aluminum Cans, Tin Cans, Painted Aluminum Siding, Insulated Wire, Aluminum Extrusions, Radiators, Copper Wire and Other Materials

### Standard Features Include

- The 2R9/2R10 is manufactured standard with either left-hand or right-hand eject.
- Operator-Free Operation
- 50 HP TEFC Motor, Standard Voltage - 460 Volt, 60 Hertz, 3 Phase (2-50 HP, 2R10)
- EXCEL® Autonetics™ in with Absolute Ram Position Sensor with Electronic Display
- U.S. Wire Tie Systems Automatic 342 Tier with Turbo Motor
- Industrial Hardened Logic Controller
- Fully Lined with Hardox® 400 Replaceable Wear Liners
- 300 Gallon Hydraulic Reservoir with Regenerative Circuit (600 gallon 2R10)
- One Year EXCEL® Limited Warranty (Parts & Labor)
- Upper and Lower Photo Eyes  
(sender/receiver upper photo eye with integrated conveyor control)
- NEMA 12 rated Enclosures and Controls with Conveyor Starter
- Installed and Working Modem for On-Line Diagnostics
- Castle Key Safety Interlocking Entry System
- Bale Chamber Penetration (2R9 - 27")(2R10 - 24")
- Automatic Bale Release Door
- Automatic Shear Jam Correction
- Bale Discharge Platform
- One Spool of 12 Gauge Ultra High Tensile Galvanized Wire
- Sandblasted, Primed, and Painted Excel Blue for Long Lasting Durability
- Air to Oil Heat Exchanger
- Integrated Steel Platen Wiper
- UL, CUL Approved (CE Available)
- Bale Counter
- Hardened, Serrated, Turnable Cutting Knives
- Hour Meter
- 9" eject cylinder
- Separation Door for Solid Waste and Scrap Applications (Available Option)
- Available with EXCEL® integrated conveyors with rubber or steel belts for a turn-key system

# GENERAL SPECIFICATIONS

## 2R9

## 2R10

### STRUCTURAL

Overall dimensions and shipping weight may vary with options

OVERALL LENGTH (A)	28'7" (8.75 meters) w/stairs	33'10" feet (10.09 meters) w/stairs
OVERALL WIDTH (B)	13'3" (4.05 meters)	13'5" (4.11 meters)
OVERALL HEIGHT (C)	8'8" (2.68 meters)	8'8" (2.68 meters)
FEED OPENING (D)	40"W x 65"L (102cm x 165cm)	40"W x 90"L (102cm x 229cm)
CHAMBER FLOOR	3/4" Thick Plate plus 3/8" Hardox 400 Liner	1" Thick Plate plus 3/8" Hardox 400 Liner
CHAMBER SIDEWALLS	3/4" Plate plus 3/8" Hardox 400 Liner	3/4" Plate plus 3/8" Hardox 400 Liner
SHIPPING WEIGHT (APPROXIMATE)	47,500 lbs (21,545kg) (with bale separation door)	58,000 lbs (26,308kg) (with bale separation door)

### PERFORMANCE DATA

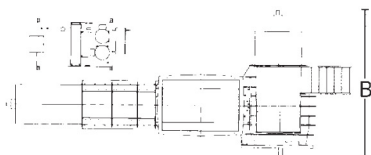
MAIN CYLINDER	9"(22.9cm) bore x 106" (269cm) stroke 6"(15.2cm) hardened chrome rod	10"(25.4cm) bore x 130" (330cm) stroke 7"(17.8cm) hardened chrome rod
EJECT CYLINDER	9"(22.9cm) bore - 6"(15.2cm) chrome rod	9"(22.9cm) bore - 6"(15.2cm) chrome rod
OIL RESERVOIR	300 gallons (1,137 liters)	600 gallons (2,273 liters)
INDEPENDENT PUMPS	100 GPM (379 liters)	200 GPM (758 liters)
MOTORS	50 HP TEFC 460V, 3 Phase	2-50 HP, TEFC, 460V, 3 Phase
SYSTEM PRESSURE	3,000 PSI Automatic Mode (3,250 PSI Maximum)	3,000 PSI Automatic Mode (3,250 PSI Maximum)
OVERALL PLATEN FORCE	190,851 lbs. / 206,756 lbs. Maximum	235,619 lbs. / 255,254 lbs. Maximum
PLATEN PSI	162 PSI / 175 PSI Maximum	200 PSI / 216 PSI Maximum
CYCLE TIME	20 seconds	16 seconds
ESTIMATED BALE SIZE (ADJUSTABLE)	60"L X 45"W X 30"H (152cm x 114cm x 76cm) 46.88 cu.ft. (1.33m³)	60"L x 45"W x 30"H (152cm x 114cm x 76cm) 46.88 cu.ft. (1.33 m³)

### BALE WEIGHTS\*

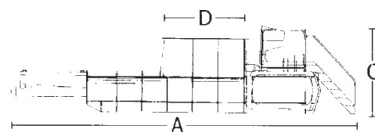
OCC	1,400 lbs (635kg) 8 TPH	1,500 lbs (680kg) 15 TPH
MAGAZINES	2,400 lbs (1,088kg) 20 TPH	2,500 lbs (1,133kg) 25 TPH
NEWSPRINT	1,600 lbs (726kg) 15 TPH	1,700 lbs (771kg) 25 TPH
HDPE PLASTICS	1,300 lbs (589kg) 5 TPH	1,350 lbs (612kg) 8 TPH
PET PLASTICS	1,200 lbs (544kg) 6 TPH	1,325 lbs (601kg) 9 TPH
SOLID WASTE	2,000 lbs (907kg) 15 TPH	2,200 lbs (997kg) 25 TPH
ALUMINUM CANS	800 lbs (362kg) 6 TPH	1,000 lbs (453kg) 9 TPH
TIN CANS	2,000 lbs (907kg) 15 TPH	2,200 lbs (998kg) 20 TPH
ALUMINUM EXTRUSIONS	1,400 lbs (635kg) 6 TPH	1,500 lbs (680kg) 9 TPH
PAINTED ALUMINUM SIDING	2,000 lbs (907kg) 7.5 TPH	2,200 lbs (998kg) 11.5 TPH
RADIATORS	1,800 lbs (816kg) 8 TPH	2,000 lbs (907kg) 12 TPH
INSULATED COPPER WIRE	3,500 lbs (1,587kg) 15 TPH	3,700 lbs (1,678kg) 22 TPH
MISC. NON-FERROUS SCRAP	1,500 lbs (680kg) 6 TPH	1,700 lbs (771kg) 10 TPH

Note: To provide our customers with the best possible equipment, and offer the latest in product improvements, these specifications are subject to change without notice, and without incurring responsibility to units previously sold.

Due to Equipment Upgrades \* Bale Weights are based on actual customer surveys, and may differ due to moisture content, material density, etc.



TOP VIEW



SIDE VIEW

## Excel Baler LLC

30787 CR 33 • Utica, MN 55979

Email: [sales@excelbalmfg.com](mailto:sales@excelbalmfg.com)

Phone: 507-993-6031

[www.excelbalmfg.com](http://www.excelbalmfg.com)

**(800) 475-8812**