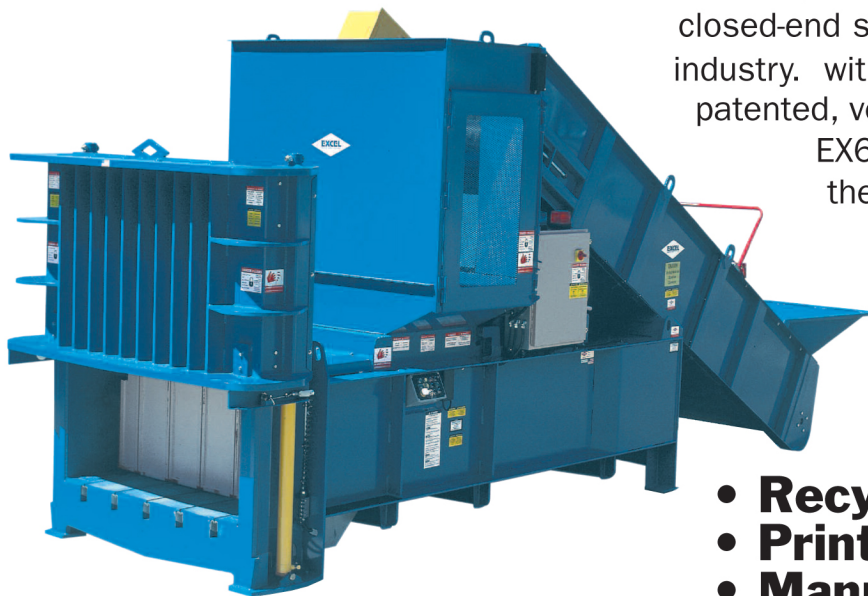


EXCEL
BALER

Models EX66 & EX77

The EXCEL® models EX66 & EX77 are designed to be the most durable, efficient, and productive, closed-end single ram baler in the industry. With EXCEL's® innovative, patented, vertical lifting door, the EX66 & EX77 distinguish themselves as the most dependable, practical and universal balers ever built in this class of balers.



- **Recyclers**
- **Printers**
- **Manufactures**
- **Warehouses**
- **Small Scrap Yards**

EX77 Bales Light Non-Ferrous!

The EXCEL® Model EX66 bales the following materials:

Office Paper, Newspaper, OCC, Magazines, PET, HDPE, Aluminum Cans, Tin Cans, Plastic Film, Carpet Padding & Textiles. **EX77 also bales** Aluminum Siding, Tin, Insulated Wire, Radiators, and other Light Non-Ferrous materials

Standard Features Include

- (2) 6" (15.24 cm) Cylinders (EX66 only)
- (2) 6.5" (16.51 cm) Cylinders (EX77 only)
- Non-Ferrous Hopper (EX77 only)
- Remote controls on pedestal (EX77 only)
- Hardox® 400 Replaceable Wear liners
- The EX66 & EX77 is manufactured standard with a patented, hydraulic, vertical lifting door.
- 20HP TEFC Motor, Standard Voltage - 208, 230, 460 Volt, 60 Hertz, 3 Phase
- Horsepower Limited Pressure Compensated Piston Pump
- Removable, Turnable Serrated Shear Blade with 32 Cutting Points
- Five Fully Guided Wire Tie Slots
- Automatic Shear Jam Correction
- Automatic Bale Sizing System
- Short Stroke Feature to Reduce Cycle Time
- 29 Second Dry Cycle Time/21 Time Short Stroke (EX66 only)
- EXCEL's® 1-2-3 warranty (1 Year Labor 2 Years Parts, and 3 Years Structural and Cylinder) (EX66 only) (U.S.A. Only)
- 1 Year Parts & Labor (EX77)
- Complete with MV32 Hydraulic Oil
- NEMA 12 rated Enclosures and Controls
- Full Bale Ejection
- Full Platen Penetration
- Clean Out Tool and Extra Touch Up Paint
- One Bundle of 12 x 13 Single Loop Wire Ties
- Sandblasted, Primed, and Painted Exel Blue for Long Lasting Durability
- Standard Hopper
- Lower Photo Eye
- UL, CUL Approved (CE Available)
- PLC Controlled Operation
- Available with EXCEL® above ground or in-ground conveyor for a turn-key system

EX66 & EX77

GENERAL SPECIFICATIONS

Excel Model EX66

Automatic Closed End Baling Press

Excel Model EX77

Automatic Closed End Baling Press

STRUCTURAL

HEIGHT	84" (214cm)
LENGTH	186" (475cm)
WIDTH	88" (224cm)
CHAMBER	45"L (112.5cm) x 60"W (152cm) x 30"H (76cm)
FEED OPENING	54"W (137cm) x 35"L (89cm)
WEAR LINERS	
SHIPPING WEIGHT	23,260 lbs (10,550kg) (as shown)

HEIGHT	84" (214cm)
LENGTH	186" (475cm)
WIDTH	88" (224cm)
CHAMBER	45"L (112.5cm) x 60"W (152cm) x 30"H (76cm)
FEED OPENING	54"W (137cm) x 35"L (89cm)
WEAR LINERS	1/4" Hardox 400 Chamber Liner
SHIPPING WEIGHT	24,860 lbs. (11,276kg) (as shown)

PERFORMANCE DATA

MAIN CYLINDER	(2) 6" (15cm) Bore x 74" (188cm) Stroke x 4" (10cm) Hard Chrome Rod
EJECT CYLINDER	
OIL RESERVOIR	105 Gal. (399 liters)
PUMP	34 gal. (130 liters) Pressure Compensated Horse Power Limited Piston Pump, 4,000 PSI Rated
MOTORS	20 HP TEFC 230-460 Volt, 3 Phase
SYSTEM PRESSURE	3,000 PSI Automatic Mode (3,250 Maximum)
OVERALL PLATEN FORCE	159,467 lbs.
PLATEN PSI	94 PSI
CYCLE TIME	29 Sec. - 21 Sec. Short Stroke
ESTIMATED BALE SIZE	60"L (152cm) x 45"W (122cm) x 30"H (76cm)
DIRECTIONAL VALVE	D08 Pattern, Hi-Flow Cushion Shift Design
VERTICAL DOOR CLY.	(2) 3" (7.5cm) Bore x 42" (105cm) Stroke x 2" (5.1cm) Rod
ENCLOSURE	NEMA 12 Rated, UL Approved
CONTROLS	UL/CUL/CE Approved, NEMA 12 Rated

MAIN CYLINDER	(2) 6.5" (16.5cm) Bore x 74" (188cm) Stroke x 4.5" (11.5cm) Hard Chrome Rod
EJECT CYLINDER	
OIL RESERVOIR	105 Gal. (399 liters)
PUMP	34 gal. (130 liters) Pressure Compensated Horse Power Limited Piston Pump, 4,000 PSI Rated
MOTORS	20 HP TEFC 230-460 Volt, 3 Phase
SYSTEM PRESSURE	3,000 PSI Automatic Mode (3,250 Maximum)
OVERALL PLATEN FORCE	187,153 lbs.
PLATEN PSI	110 PSI
CYCLE TIME	34 sec. - 26 sec. Short Stroke
ESTIMATED BALE SIZE	60"L (152cm) x 45"W (122cm) x 30"H (76cm)
DIRECTIONAL VALVE	D08 Pattern, Hi-Flow Cushion Shift Design
VERTICAL DOOR CLY.	(2) 4" (7.5cm) Bore x 42" (105cm) Cylinders Stroke x 2.25" (5.65cm) Rod
ENCLOSURE	NEMA 12 Rated
CONTROLS	UL/CUL/CE Approved, NEMA 12 Rated

BALE WEIGHTS *

OCC	1,200 lbs. (544kg) 3.3 TPH
MAGAZINES	2,000 lbs. (907kg) 7.5 TPH
NEWSPAPER	1,500 lbs. (680kg) 6.4 TPH
OFFICE PAPER	1,600 lbs. (726kg) 6.8 TPH
HDPE	1,100 lbs. (499kg) 2.3 TPH
PET	1000 lbs. (454kg) 1.8 TPH
ALUMINUM CANS	625 lbs. (284kg) 2.3 TPH
TIN CANS	1,200 lbs. (544kg) 4.5 TPH
ALUMINUM EXTRUSIONS	____ N/A ____
PAINTED ALUMINUM SIDING	____ N/A ____
RADIATORS	____ N/A ____
INSULATED COPPER WIRE	____ N/A ____

OCC	1,300 lbs. (590kg) 3.3 TPH
MAGAZINES	2,300 lbs. (1042kg) 7.5 TPH
NEWSPAPER	1,600 lbs. (726kg) 6.4 TPH
OFFICE PAPER	1,700 lbs. (771kg) 6.8 TPH
HDPE	1,225 lbs. (556kg) 2.3 TPH
PET	1,100 lbs. (499kg) 1.8 TPH
ALUMINUM CANS	750 lbs. (340kg) 2.3 TPH
TIN CANS	1,600 lbs. (724kg) 4.5 TPH
ALUMINUM EXTRUSIONS	900 lbs. (408kg) 1.35 TPH
PAINTED ALUMINUM SIDING	1,300 lbs (590kg) 2.3 TPH
RADIATORS	1,300 lbs (590kg) 2.6 TPH
INSULATED COPPER WIRE	3,300 lbs. (1496kg) 6.6 TPH

Excel Baler LLC

30787 CR 33 • Utica, MN 55979

Email: sales@excelbalermfg.com • Phone: 507-993-6031

www.excelbalermfg.com

* Bale Weights are based on actual customer surveys, and may differ with moisture content, material density, etc.

* Due to Equipment Upgrades, Specifications are Subject to Change

(800) 475-8812

Revised 8/2021