

Models HV9 & HV10

Two ram construction in a single ram baler

The EXCEL® HV9 & HV10 have the revolutionary single sheet, interlocking construction found in our two-ram balers. The floor and side sheets are all single sheets, cut to fit together for indestructible construction. The HV9 & HV10 bale newspaper, office paper, magazines, OCC, PET, HDPE,

aluminum cans and tin cans without

preconditioning. Its extra

heavy duty construction

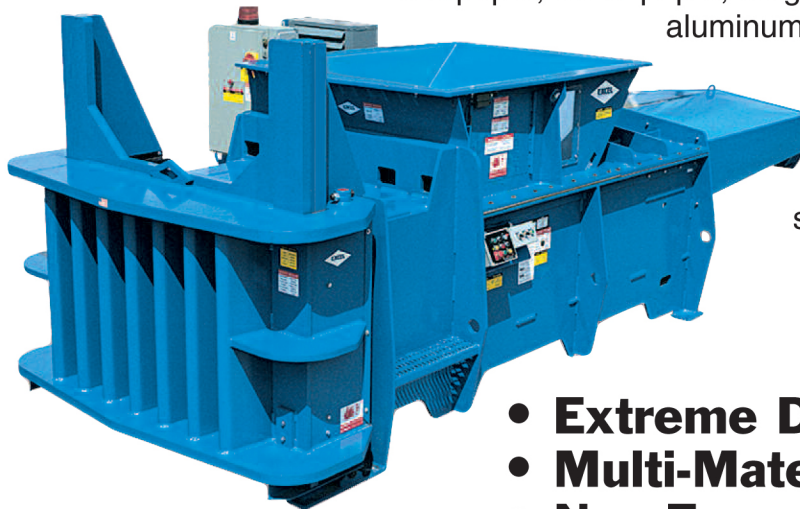
allows the HV's to also

bale painted aluminum

siding, radiators, aluminum

extrusion, and insulated

wires.



- **Extreme Duty Applications**
- **Multi-Material Handlers**
- **Non-Ferrous Processors**

The EXCEL® Model HV9 & HV10 bale the following materials:

Office Paper, Newspaper, OCC, Magazines, PET, HDPE, Aluminum Cans, Tin Cans, Painted Aluminum Siding, Insulted Wire, Aluminum Extrusions, Radiators, Copper and Other Materials

Standard Features Include

- Patented Hydraulic Bale Pusher Bar: (HV10 only)
- Extends to push bale beyond vertical door to allow tie off and ejection of the next bale
- The HV9 & HV 10 are manufactured standard with either left-hand or right-hand hopper and controls
- 50HP TEFC Motor, Standard Voltage - 460 Volt, 60 Hertz, 3 Phase
- Industrial Hardened Logic Controller
- Hardox® 400 Replaceable Wear Liners
- 300 Gallon Hydraulic Reservoir with Regenerative Circuit
- One year EXCEL® Limited Warranty (Parts & Labor)
- Tongue and Groove Corrugated Floor
- Automatic Bale Sizing System
- Automatic Shear Jam Correction
- NEMA 12 rated Enclosures and Controls on Moveable Pedestal
- Castle Key Safety Interlocking System
- Full Bale Chamber Penetration
- Standard Hopper with Inspection Window
- Clean Out Tool, Grease Gun, and Extra Spray Paint
- One Bundle of 12 gauge x 13ft. Single Loop Wire Ties
- Sandblasted, Primed, and Painted Excel Blue for Long Lasting Durability
- Air to Oil Heat Exchanger
- Lower Photo Eye
- UL, CUL Approved (CE Available)
- Available with EXCEL® integrated conveyors with rubber or steel belts for a turn-key system

GENERAL SPECIFICATIONS

HV9

Automatic Close End Baling Press

HV10

Automatic Close End Baling Press

STRUCTURAL

| | | |
|-------------------|--|--|
| HEIGHT | 84" (213cm) | 84" (213cm) |
| LENGTH | 254" (645cm) | 254" (645cm) |
| WIDTH | 88" (224cm) | 88" (224cm) |
| CHAMBER | 45" (114cm) L x 59" (150cm) W x 29" (74cm) H | 45" (114cm) L x 59" (150cm) W x 29" (74cm) H |
| FEED OPENING | 55" (140cm) W x 45" (114cm) L | 55" (140cm) W x 45" (114cm) L |
| CHAMBER FLOOR | 1" PLATE | 1" PLATE |
| CHAMBER SIDEWALLS | 3/4" PLATE | 3/4" PLATE |
| SHIPPING WEIGHT | 38,000 lbs. (17,236kg) | 40,000 lbs. (18,143kg) |

PERFORMANCE DATA

| | | |
|-------------------------------------|--|---|
| MAIN CYLINDER | 9" (23cm) Bore x 100" (254cm) stroke x 6" (15cm) Chrome Rod | 10" (25.4cm) Bore x 100" (254cm) stroke x 7" (18cm) Chrome Rod |
| OIL RESERVOIR | 300 Gal. (1,136 liters) | 300 Gal. (1,136 liters) |
| INDEPENDENT PUMPS | 100 GPM (376 LPM) | 100 GPM (376 LPM) |
| MOTORS | 50 HP TEFC 460V, 3 Phase (200V Optional) | 50 HP TEFC 460V, 3 Phase (200V Optional) |
| SYSTEM PRESSURE | 3,000 PSI Automatic Mode (3,250 Maximum) | 3,000 PSI Automatic Mode (3,250 Maximum) |
| OVERALL PLATEN FORCE | 190,851 lbs. / 206,756 lbs. Maximum | 235,619 lbs. / 255,254 lbs. Maximum |
| PLATEN PSI | 117 PSI / 127 PSI Maximum | 145 PSI / 157 PSI Maximum |
| CYCLE TIME | 15 Seconds - 11 Seconds Short Stroke | 17 Seconds - 13 Seconds Short Stroke |
| ESTIMATED BALE SIZE (ADJUSTABLE) | 60"L (152cm) x 45"W (114cm) x 30"H (76cm) | 60" (152cm) L x 45" (114cm) W x 30" (76cm) H |
| ENCLOSURE | NEMA 12 Rated | NEMA 12 Rated |
| CONTROLS | CE/UL Approved NEMA 12 Rated | CE/UL Approved NEMA 12 Rated |

BALE WEIGHTS *

| | | |
|-------------------------|-------------------------------|--------------------------------|
| OCC | 1,400 lbs. (635 kg) 3.8 TPH | 1,500 lbs. (680 kg) 4.1 TPH |
| Magazines | 2,300 lbs. (1,043 kg) 9.5 TPH | 2,400 lbs. (1,087 kg) 10 TPH |
| Newspaper | 1,600 lbs. (726 kg) 8 TPH | 1,700 lbs. (771 kg) 8.4 TPH |
| Office Paper | 1,600 lbs. (726 kg) 8 TPH | 1,700 lbs. (771 kg) 8.4 TPH |
| HDPE | 1,250 lbs. (567 kg) 3.1 TPH | 1,250 lbs. (566 kg) 3.4 TPH |
| PET | 1,150 lbs. (521 kg) 2.8 TPH | 1,150 lbs. (521 kg) 3 TPH |
| Aluminum Cans | 750 lbs. (680 kg) 3.75 TPH | 900 lbs. (408 kg) 3.95 TPH |
| Tin Cans | 1,600 lbs. (726 kg) 4.8 TPH | 1,800 lbs. (816 kg) 5.1 TPH |
| Aluminum Extrusions | 1,000 lbs. (409 kg) 2.5 TPH | 1,200 lbs. (554 kg) 2.7 TPH |
| Painted Aluminum Siding | 1,700 lbs. (771 kg) 4.25 TPH | 2,000 lbs. (907 kg) 4.5 TPH |
| Radiators | 1,500 lbs. (680 kg) 4.5 TPH | 1,700 lbs. (771 kg) 4.7 TPH |
| Insulated Copper Wire | 3,300 lbs. (1,497 kg) 10 TPH | 3,500 lbs. (1,587 kg) 10.5 TPH |
| Misc. Non-Ferrous Scrap | 1,300 lbs. (590 kg) 4.8 TPH | 1,500 lbs. (680 kg) 5.1 TPH |

Excel Baler LLC

30787 CR 33 • Utica, MN 55979

Email: sales@excelbalermfg.com • Phone: 507-993-6031

www.excelbalermfg.com

* Bale Weights are based on actual customer surveys, and may differ with moisture content, material density, etc.

* Due to Equipment Upgrades, Specifications are Subject to Change

(800) 475-8812

Revised 8/2021